

# COLLISION REPORTING CENTER



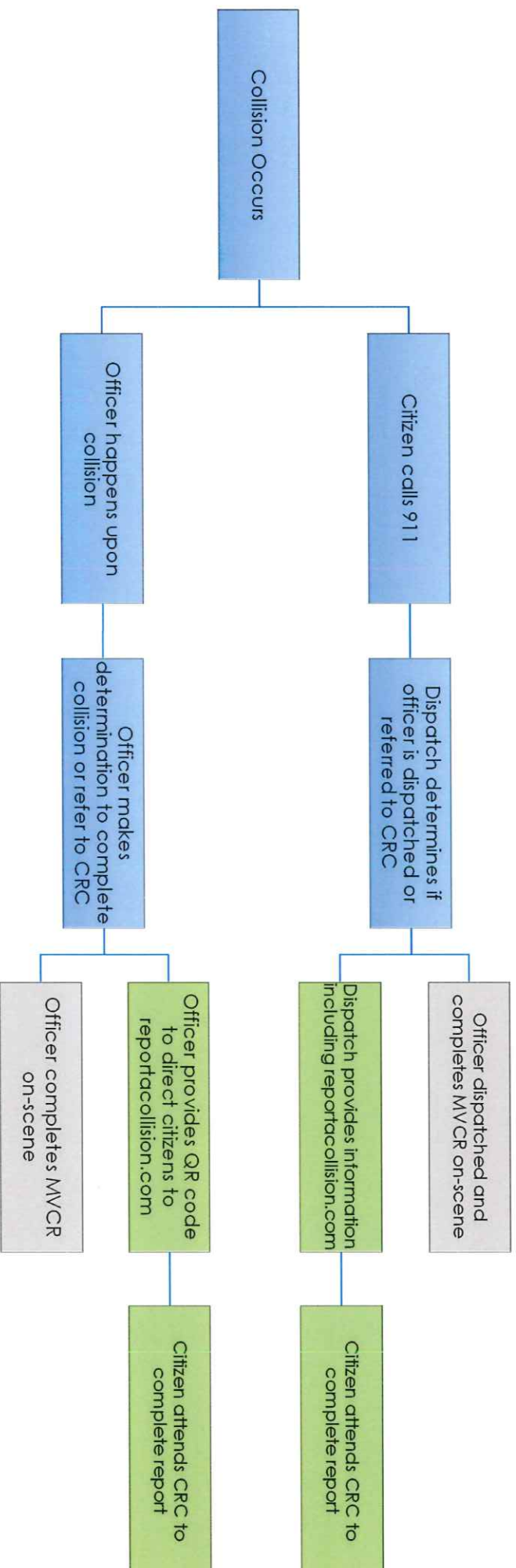
# Workflow

**COLLISIONS REFERRED TO  
THE CRC**



**Accident**  
Support Services International Ltd.

## COLLISION WORKFLOW



# COLLISIONS NOT REFERRABLE TO THE CRC

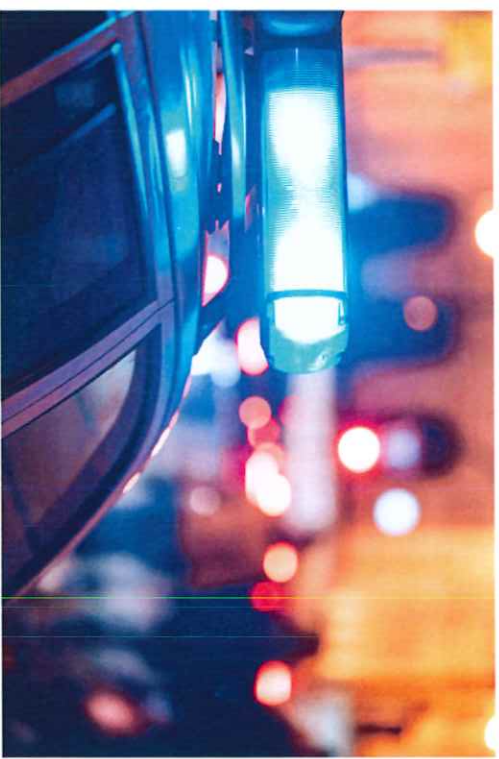




### **OFFICERS MUST ATTEND WHEN A COLLISION INVOLVES:**

- Death or injuries that require medical transport from the scene to a hospital
- Criminal activity (e.g. impaired driving, stolen vehicle, etc.)
- A vehicle transporting dangerous goods / hazardous materials
- A person whose driver's license is suspended or is uninsured
- Damage to private, municipal or highway property
- A municipal service vehicle
- Bicycles and/or Pedestrians

**\*All other collisions to be referred to the CRC**

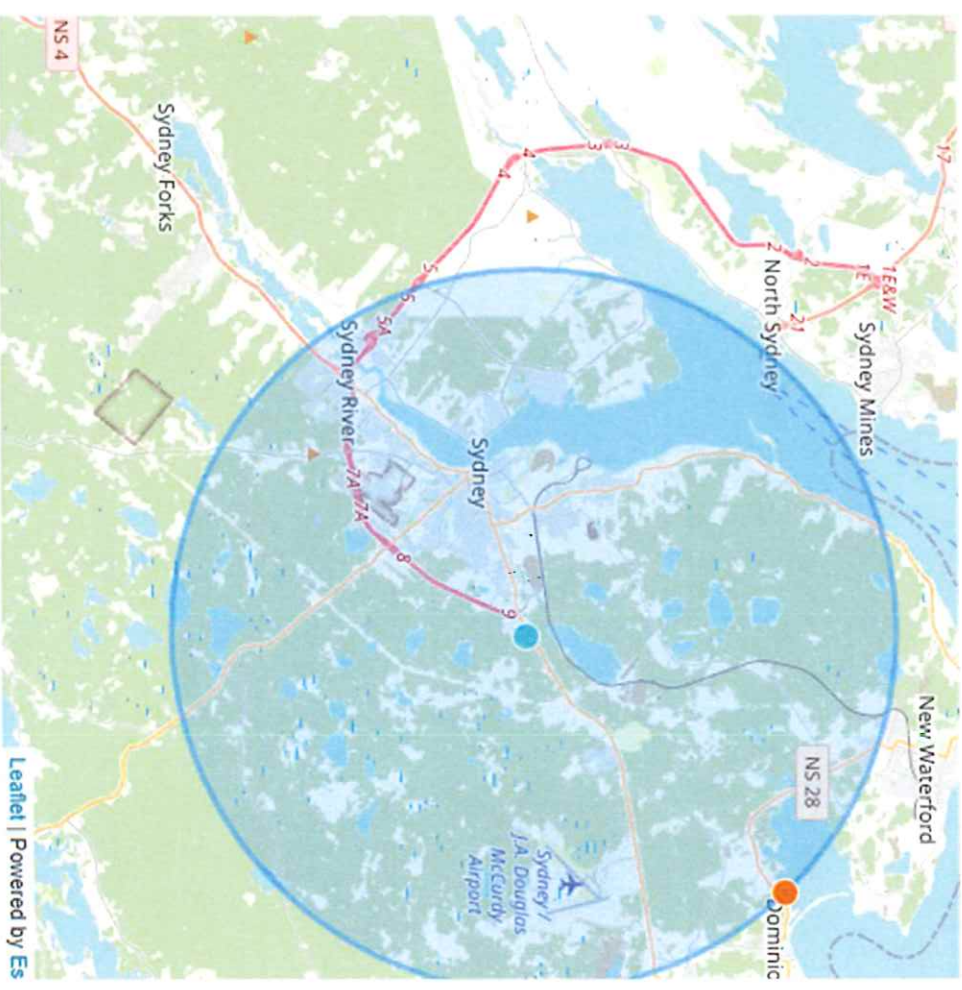




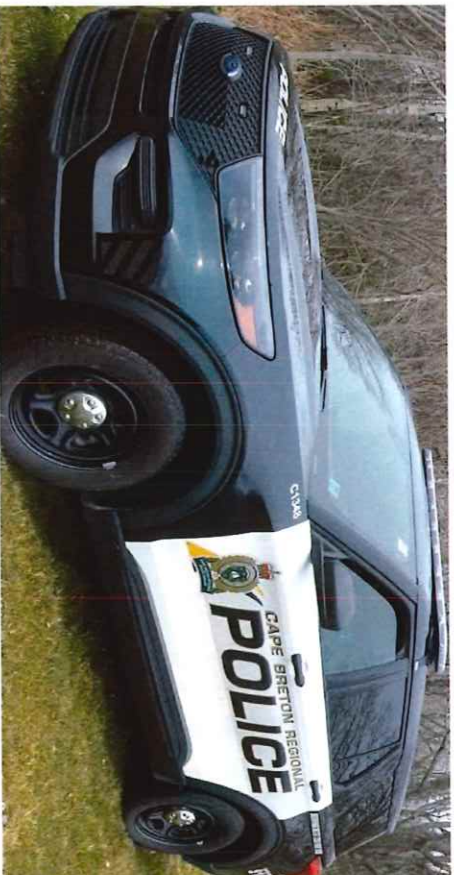
# TOWING BOUNDARIES



**NON DRIVABLE  
VEHICLES WILL  
ONLY BE TOWED TO  
THE CRC IF THE  
ACCIDENT  
HAPPENS WITHIN A  
10KM RADIUS OF  
CENTRAL  
HEADQUARTERS**



# BENEFITS TO POLICE



- Officers Available for Higher Priority Needs
- Collisions Redeployed to CRC
- Reduce Secondary Collisions
- Secure & User Friendly
- Easily Accessible Data Records
- Complete Collision Data Analysis
  - Near Real Time Availability
- Proactive Traffic Safety Efforts





## **BENEFITS TO THE PUBLIC**

- Shorter roadside wait times
- Safe & comfortable environment
- Increased safety by clearing roadway
- Reduces traffic congestion
- Reporting made convenient
- Quicker claims process
- Information made timely to Traffic Engineers
  - To resolve road configuration issues



# DISCUSSION AND QUESTIONS