

A large yellow geometric shape, resembling a stylized arrow or a series of triangles, is positioned on the left side of the slide, pointing towards the right.

Annual Amendments to CBRM's Land Use By-law

EV Charging Stations

- Added a definition for EV Charging Stations
- Replace the current definition for Motor Vehicle Fuels with Motor Vehicle Fueling Station

Signs

- Reformatted to eliminate repetition
- Standard sign size based on sign type
- Simplified the definition for 'Sign'

Supportive Housing – Accessory Dwelling Units & Secondary Suites

- Response to an amendment request from 2024
- Secondary Suites and the National Building Code
- Add the term Dwelling Unit to Residential Zones
- Amend the definition for Supportive Housing
- Amendments to S4.14 More than One Use on a Lot

Development Standards

- Townhouse/Apartment
- Minimum Lot Depth
- Group Dwellings
- Residential Density

Land Use By-law Zone Map

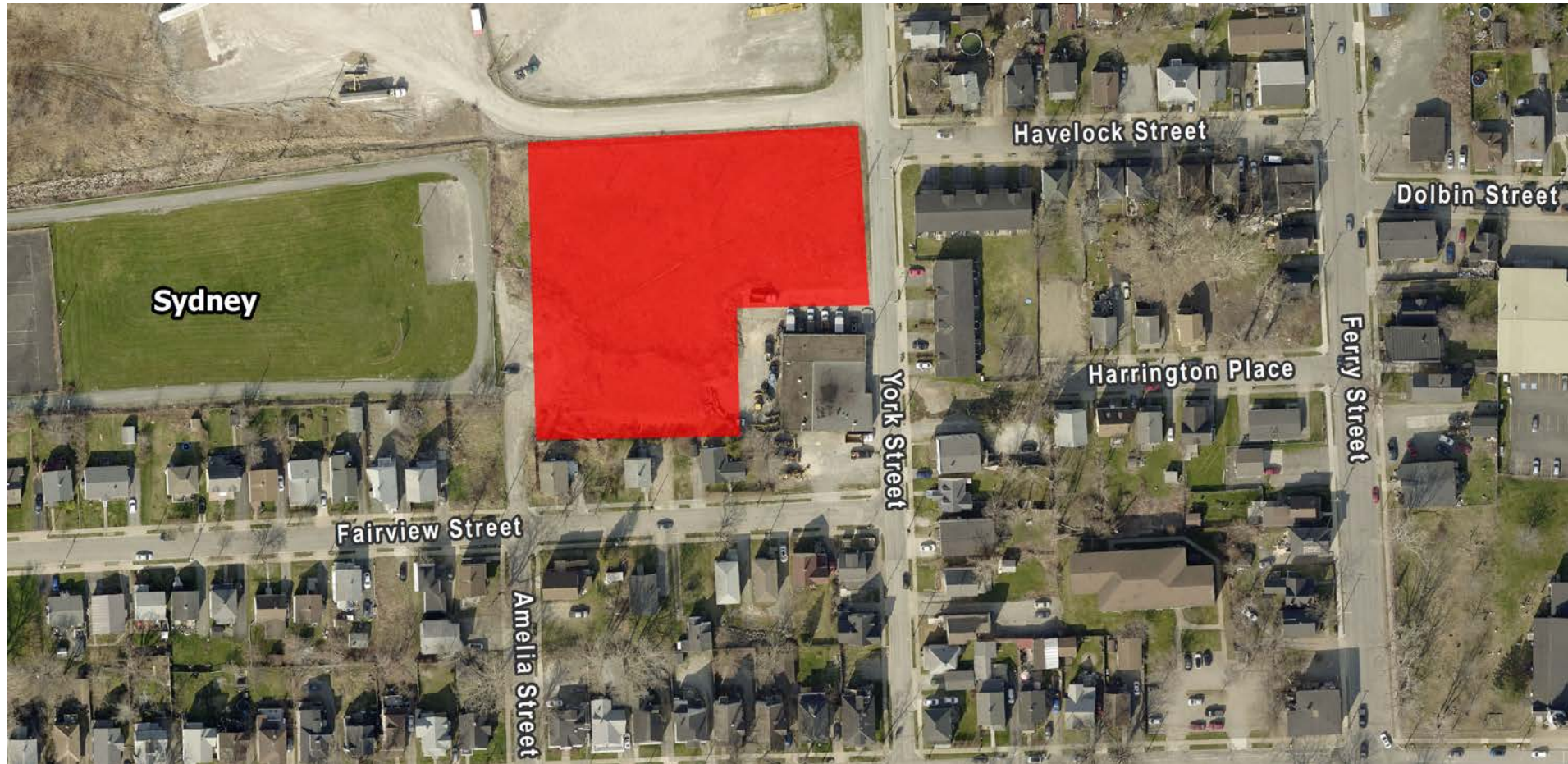


Recommendation

Give First Reading to consider approval of the proposed amendments to the CBRM Forward Land Use By-law, as set out in Attachment A, and schedule a public hearing.

Land Use By-law Zone Map

Land Use By-law Zone Map



Collaborative
Community
Planning

FORWARD

Land Use By-law Zone Map



Land Use By-law Zone Map



Land Use By-law Map





CBRM Collaborative
Community
Planning
FORWARD